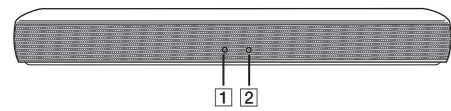




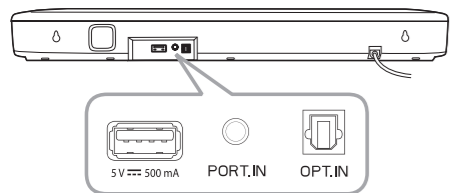
Front Panel



- State LED**
 - White (Staying on): Optical function is selected.
 - White (Blinking twice and staying on): LG Sound Sync (Optical) function is selected.
 - Green (Staying on): Portable function is selected.
 - Red (Staying on): Standby mode without network connection.
- Bluetooth LED**
 - Blue (Blinking): Waiting for Bluetooth connection.
 - Blue (Staying on): Paired with Bluetooth device.

! This unit operates only with the remote control.

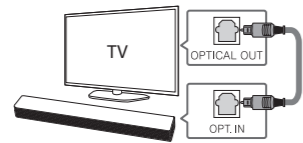
Rear Panel



PORT. IN (Portable) Connect to a portable device.
OPT. IN (Optical) Connect to an optical device.

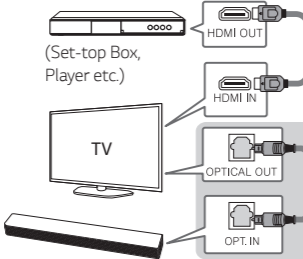
TV Connection

- Connect the sound bar to the TV using Optical cable.
- Set up [External Speaker (Optical)] on your TV setting menu.



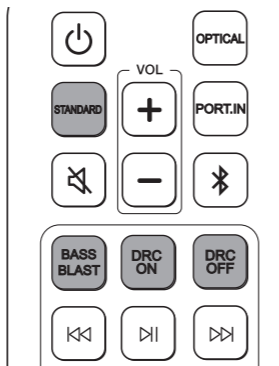
Additional Device Connection

- Connect to the external device as follows.



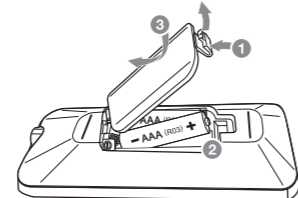
- Set the input source by pressing **OPTICAL** on the remote control.

Remote control



STANDARD/BASS BLAST : Selects the sound effect.
DRC ON/OFF : Dynamic Range Control optimizes the volume level of compatible Dolby Digital content.

Replacement of battery



Additional Information

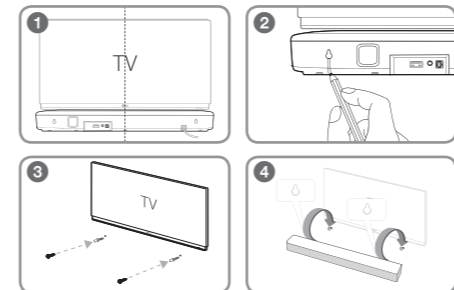
Specification

Power requirements	Refer to the main label.
Power consumption	Refer to the main label.
Dimensions (W x H x D)	Approx. 650.0 mm x 79.0 mm x 94.0 mm With foot (25.6 inch x 3.1 inch x 3.7 inch)
Amplifier (Total RMS Output power)	40 W RMS

Design and specifications are subject to change without notice.

Wall mounting (Optional)

You can mount the main unit on a wall by using holes on the rear of the unit. For details, download the online owner's manual. <http://www.lg.com>



BUY : [Icons for screws and anchors]

